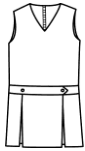


# ST. MARY OF THE ASSUMPTION SCHOOL

School Code: SH00CR

424 E. Cypress St. ; Santa Maria, CA 93454

## Girls, grades: K-5 SHIFTS



Girls 3-20	\$48.00
Girls Plus 6½-16½	\$49.00

Item #: 011130-201

Marymount Plaid-Center box pleat (455)

**School Policy: Required for Formal Dress**

## Girls, grades: 6-8 SKORTS



Girls 3-20	\$33.00
Juniors 1-19	\$35.00
Juniors 21-25	\$35.00

Item #: 035170-965

Pleated Skort-Navy Twill (069)

**School Policy: Required for Formal Dress; choice of skort.**

## Girls, grades: 6-8 SKORTS



Girls 3-20	\$47.00
Girls Plus 6½-16½	\$53.00
Juniors 1-19	\$53.00
Juniors 21-25	\$53.00

Item #: 035210-201

Marymount Plaid w/Tabs (455)

**School Policy: Required for Formal Dress; choice of skort**

## Girls, grades: 6-8 SKORTS



Girls 3-20	\$32.00
Girls Plus 6½-16½	\$33.50
Juniors 1-19	\$34.00
Juniors 21-25	\$34.00

Item #: 035210-965

Skort-Navy Twill w/Tabs (069)

**School Policy: Required for Formal Dress; choice of skort.**

## Girls, grades: K-5 BLOUSES



Youth 2-16	\$18.50
Adult S-2XL	\$19.50

Item #: 00080A-911

White BC S/S-Peter Pan Collar (119)

**School Policy: Required for Formal Dress**

## Girls, grades: K-5 BLOUSES



Youth 2-16	\$21.50
Adult S-2XL	\$22.50

Item #: 00080C-911

White BC L/S-Peter Pan Collar (119)

## Girls, grades: 6-8 BLOUSES



Youth 2-16	\$18.50
Adult S-2XL	\$19.50

Item #: 00082A-911

White S/S-Sport Collar (119)

**School Policy: Required for Formal Dress**

## Girls, grades: 6-8 BLOUSES



Girls 8-18	\$27.00
Slim 8-16	\$27.00
Girls 8½-16½	\$27.00
Juniors 1-25	\$29.00

Item #: 04470A-998

Taylor Blouse S/S-White Stretch Poplin (119)

**School Policy: Required for Formal Dress**

---

**Girls, grades: K-8 POLO**

Youth XS-XL	\$27.70
Adult S-3XL	\$29.70

Item #: 08340A-Y8Y

Performance Polo S/S-Navy w/St. Mary of the Assumption fiberlok (067)

Performance Polo S/S-White w/St. Mary of the Assumption fiberlok (119)

**School Policy: May not be worn for Formal Dress**

---

**Girls, grades: K-8 POLO**

Youth 2XS-XL	\$22.70
Adult S-3XL	\$24.70

Item #: 08700A-Y8Y

Ash Pique S/S w/St. Mary of the Assumption fiberlok (002)

Navy Pique S/S w/St. Mary of the Assumption fiberlok (067)

White Pique S/S w/St. Mary of the Assumption fiberlok (119)

**School Policy: May not be worn for Formal Dress**

---

**Girls, grades: K-8 POLO**

Youth 2XS-XL	\$26.70
Adult S-3XL	\$28.70

Item #: 08700C-Y8Y

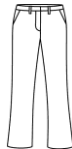
Ash Pique L/S w/St. Mary of the Assumption fiberlok (002)

Navy Pique L/S w/St. Mary of the Assumption fiberlok (067)

White Pique L/S w/St. Mary of the Assumption fiberlok (119)

**School Policy: May not be worn for Formal Dress**

---

**Girls, grades: K-8 PANTS**

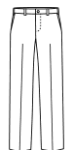
Girls 3-6X	\$29.00
Girls 7-20	\$31.00
Girls Plus 6½-18½	\$35.00
Juniors 1-25	\$36.00

Item #: 040330-998

Navy Flat Front Stretch (067)

**School Policy: May not be worn for Formal Dress**

---

**Girls, grades: K-8 PANTS**

Girls 3-6 or Slim 4-6	\$27.00
Girls 7-20 or Slim 7-16	\$29.00
Girls Plus 6½-16½	\$33.00
Juniors 1-25	\$34.00

Item #: 040390-962

Girls-Irvington Flat Front-Navy Twill (067)

**School Policy: May not be worn for Formal Dress**

---

**Girls, grades: K-8 WALK SHORTS**

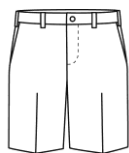
Girls 3-6X	\$26.00
Girls 7-20	\$28.00
Girls Plus 6½-18½	\$30.00
Juniors 1-25	\$32.00

Item #: 040320-998

Navy Knee Length FF Stretch (067)

**School Policy: May not be worn for Formal Dress**

---

**Girls, grades: K-8 WALK SHORTS**

Girls 3-6 or Slim 4-6	\$24.00
Girls 7-20 or Slim 7-16	\$26.00
Girls Plus 6½-16½	\$28.00
Juniors 1-27	\$30.00

Item #: 040820-962

Girls-Irvington Flat Front-Navy Twill (067)

**School Policy: May not be worn for Formal Dress**

---

**Girls, grades: K-8 CARDIGAN**

Youth 2XS-XL	\$36.50
Adult S-XL	\$41.00
Adult 2XL-3XL	\$46.50

Item #: 063000-976

Heather Grey V-Neck (045)

Navy V-Neck (067)

**School Policy: Optional; May be worn with or without school logo**

---

**Girls, grades: K-8 CARDIGAN**

Youth 2XS-XL	\$40.25
Adult S-XL	\$44.75
Adult 2XL-3XL	\$50.25

Item #: 063000-Y8Y

Heather Grey V-Neck w/St. Mary of the Assumption fiberlok (045)

Navy V-Neck w/St. Mary of the Assumption fiberlok (067)

**School Policy: Optional; may be worn with or without school logo**

---

**Girls, grades: 6-8 CARDIGAN**

Youth 2XS-XL	\$36.50
Adult S-XL	\$41.00
Adult 2XL-3XL	\$46.50

Item #: 063000-976

Red V-Neck (095)

**School Policy: Optional; may be worn with or without school logo**

---

**Girls, grades: 6-8 CARDIGAN**

Youth 2XS-XL	\$40.25
Adult S-XL	\$44.75
Adult 2XL-3XL	\$50.25

Item #: 063000-Y8Y

Red V-Neck w/St. Mary of the Assumption fiberlok (095)

**School Policy: Optional; may be worn with or without school logo**

---

**Girls, grades: K-8 PULLOVER**

Youth 2XS-XL	\$32.00
Adult S-XL	\$36.50
Adult 2XL-3XL	\$41.25

Item #: 065000-976

Heather Grey V-Neck (045)

Navy V-Neck (067)

**School Policy: Optional; may be worn with or without school logo**

---

**Girls, grades: K-8 PULLOVER**

Youth 2XS-XL	\$35.75
Adult S-XL	\$40.25
Adult 2XL-3XL	\$45.00

Item #: 065000-Y8Y

Heather Grey V-Neck w/St. Mary of the Assumption fiberlok (045)

Navy V-Neck w/St. Mary of the Assumption fiberlok (067)

**School Policy: Optional; may be worn with or without school logo**

---

**Girls, grades: 6-8 PULLOVER**

Youth 2XS-XL	\$32.00
Adult S-XL	\$36.50
Adult 2XL-3XL	\$41.25

Item #: 065000-976

Red V-Neck (095)

**School Policy: Optional; may be worn with or without school logo**

---

**Girls, grades: 6-8 PULLOVER**

Youth 2XS-XL	\$35.75
Adult S-XL	\$40.25
Adult 2XL-3XL	\$45.00

Item #: 065000-Y8Y

Red V-Neck w/St. Mary of the Assumption fiberlok (095)

**School Policy: Optional; may be worn with or without school logo**

---

**Girls, grades: K-8 SWEATER VEST**

Youth 2XS-XL	\$28.00
Adult S-XL	\$31.00
Adult 2XL-3XL	\$37.50

Item #: 066000-976

Heather Grey V-Neck (045)

Navy V-Neck (067)

**School Policy: Optional; may be worn with or without school logo**

---

**Girls, grades: K-8 SWEATER VEST**

Youth 2XS-XL	\$31.75
Adult S-XL	\$34.75
Adult 2XL-3XL	\$41.25

Item #: 066000-Y8Y

Heather Grey V-Neck w/St. Mary of the Assumption fiberlok (045)

Navy V-Neck w/St. Mary of the Assumption fiberlok (067)

**School Policy: Optional; may be worn with or without school logo**

---

**Girls, grades: 6-8 SWEATER VEST**

Youth 2XS-XL	\$28.00
Adult S-XL	\$31.00
Adult 2XL-3XL	\$37.50

Item #: 066000-976

Red V-Neck (095)

**School Policy: Optional; may be worn with or without school logo**

---

**Girls, grades: 6-8 SWEATER VEST**

Youth 2XS-XL	\$31.75
Adult S-XL	\$34.75
Adult 2XL-3XL	\$41.25

Item #: 066000-Y8Y

Red V-Neck w/St. Mary of the Assumption fiberlok (095)

**School Policy: Optional; may be worn with or without school logo**

---

**Girls, grades: K-8 SWEATSHIRT**

Youth 2XS-XL	\$27.25
Adult S-3XL	\$31.50

Item #: 093000-Y8Y

Sweatshirt 1/4 Zip - Navy w/St. Mary of the Assumption fiberlok (067)

Sweatshirt 1/4 Zip - Oxford Grey w/St. Mary of the Assumption fi (759)

**School Policy: Required for 6-8 PE; not allowed for Formal Dress**

---

**Girls, grades: 6-8 SWEATPANT 9oz**

Youth 3XS-XL	\$23.50
Adult S-3XL	\$26.50

Item #: 090410-Y7Y

Oxford Grey w/St. Mary screen (759)

**School Policy: Required for PE; choice of sweatpant**

---

**Girls, grades: 6-8 SWEATPANT 9oz**

Youth XS-XL	\$23.50
Adult S-3XL	\$26.50

Item #: 090410-Y9Y

Navy w/St. Marys screen (067)

**School Policy: Required for PE; choice of sweatpant**

---

**Girls, grades: 6-8 SWEATPANT 9oz**

Youth 3XS-XL	\$23.50
Adult S-2XL	\$26.50

Item #: 090750-Y7Y

Female Open Bottom Sweatpants - Oxford Grey w/St. Mary screen (759)

**School Policy: Required for PE; choice of sweatpant**

---

**Girls, grades: 6-8 SWEATPANT 9oz**

Youth 3XS-XL	\$23.50
Adult S-2XL	\$26.50

Item #: 090750-Y9Y

Female Open Bottom Sweatpants - Navy w/St. Marys screen (067)

**School Policy: Required for PE; choice of sweatpant**

---

**Girls, grades: 6-8 GYM WEAR**

Youth 3XS-XL	\$18.00
Adult S-3XL	\$20.25

Item #: 005800-Y6Y

Shorts Mini Mesh-Navy w/St. Mary of the Assumption screen (067)

**School Policy: Required for PE**

---

**Girls, grades: K-8 JACKETS**

Youth XS-L	\$47.25
Adult XS-XL	\$54.75
Adult 2XL-3XL	\$57.25

Item #: 037000-Y8Y

Hooded Microfibre -Navy w/St. Mary of the Assumption fiberlok (067)

---

**Girls, grades: K-8 FLEECE JACKET**

Youth 2XS-XL \$41.75  
Adult S-3XL \$51.75

Item #: 054000-Y8Y

Navy Microfleece Jacket-front zipper w/St. Mary of the Assumptio (067)

---

**Girls, grades: K-5 ACCESSORIES**

Youth 2-12 \$12.50  
Adult S-XL \$15.00

Item #: 035340-909

Bike Shorts-Dk Navy (025)

---

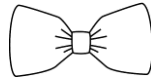
**Girls, grades: K-8 ACCESSORIES**

One size \$6.15

Item #: 004880-201

Padded Headband-Marymount Plaid (455)

---

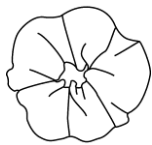
**Girls, grades: K-8 ACCESSORIES**

One size \$5.15

Item #: 005070-201

Hairbow-Marymount Plaid (455)

---

**Girls, grades: K-8 ACCESSORIES**

One size \$6.15

Item #: 005090-201

Scrunchy-Marymount Plaid (455)

---

**Girls, grades: K-8 ACCESSORIES**

One size \$10.75

Item #: 0175PS-201

Tie Crossover/Pearl Snap-Marymount Plaid (455)

**School Policy: Optional**

---

**Girls, grades: K-8 ACCESSORIES**

One size \$9.75

Item #: 0175PS-900

Tie Crossover/Pearl Snap-Navy (067)

**School Policy: Optional**

---

**Girls, grades: K-8 ACCESSORIES**

Sizes 20-28 \$14.00  
Sizes 30-48 \$14.00

Item #: 041300-900

Belt Leather-Black (007)

Belt Leather -Navy (067)

**School Policy: Boys K-8; belt required for Formal Dress**

---

**Girls, grades: K-8 ACCESSORIES**

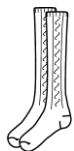
Sizes 20-30                      \$20.00  
Sizes 32-48                      \$21.00

Item #: 041500-900

Belt Braided Leather-Black (007)

**School Policy: Boys K-8; belt required for Formal Dress**

---

**Girls, grades: K-8 ACCESSORIES**

Sizes S-M-L-XL                      \$7.00

Item #: 047300-900

Knee-Hi Cable Knit-Navy (067)

Knee-Hi Cable Knit-White (119)

---

**Boys, grades: K-8 POLO**

Youth XS-XL                      \$27.70  
Adult S-3XL                      \$29.70

Item #: 08340A-Y8Y

Performance Polo S/S-Navy w/St. Mary of the Assumption fiberlok (067)

Performance Polo S/S-White w/St. Mary of the Assumption fiberlok (119)

**School Policy: May not be worn for Formal Dress**

---

**Girls, grades: K-8 ACCESSORIES**

Sizes S-M-L-XL                      \$6.00

Item #: 047200-900

Bobby Socks/Triple Roll-Navy (067)

Bobby Socks/Triple Roll-White (119)

---

**Girls, grades: K-8 ACCESSORIES**

Sizes XS-XL                      \$10.50

Item #: 047900-900

Tights Heavy Weight Opaque-Navy (067)

Tights Heavy Weight Opaque-White (119)

---

**Boys, grades: K-8 POLO**

Youth 2XS-XL                      \$22.70  
Adult S-3XL                      \$24.70

Item #: 08700A-Y8Y

Ash Pique S/S w/St. Mary of the Assumption fiberlok (002)

Navy Pique S/S w/St. Mary of the Assumption fiberlok (067)

White Pique S/S w/St. Mary of the Assumption fiberlok (119)

**School Policy: May not be worn for Formal Dress**

---

**Boys, grades: K-8 POLO**

Youth 2XS-XL	\$26.70
Adult S-3XL	\$28.70

Item #: 08700C-Y8Y

Ash Pique L/S w/St. Mary of the Assumption fiberlok (002)

Navy Pique L/S w/St. Mary of the Assumption fiberlok (067)

White Pique L/S w/St. Mary of the Assumption fiberlok (119)

**School Policy: May not be worn for Formal Dress**

---

**Boys, grades: K-8 SHIRTS**

Youth 4-20	\$21.00
Adult S-3XL	\$24.00

Item #: 00513A-910

White Broadcloth S/S-Button Front (119)

**School Policy: Required for Formal Dress; choice of shirt, must be worn with tie**

---

**Boys, grades: K-8 SHIRTS**

Youth 4-20	\$24.45
Adult S-3XL	\$27.50

Item #: 00513C-910

White Broadcloth-L/S Button Front (119)

**School Policy: Required for Formal Dress; choice of shirt, must be worn with tie**

---

**Boys, grades: K-8 SHIRTS**

Youth 4-20	\$22.50
Adult S-3XL	\$26.00

Item #: 02900A-950

White Oxfordcloth-S/S (119)

**School Policy: Required for Formal Dress; choice of shirt, must be worn with tie**

---

**Boys, grades: K-8 SHIRTS**

Youth 4-20	\$23.50
Adult S-3XL	\$27.50

Item #: 02900C-950

White Oxfordcloth-L/S (119)

**School Policy: Required for Formal Dress; choice of shirt, must be worn with tie**

---

**Boys, grades: K-8 PANTS**

Boys Reg 3-7 or Slim 4-7	\$27.00
Boys Reg 8-16 or Slim 8-16	\$29.00
Boys Husky 8-32	\$33.00
Mens 27-32 Hemmed	\$34.00
Mens 33-48	\$34.00

Item #: 071000-962

Boys-Hawthorne Plt Front - Navy Twill (067)

**School Policy: Required for Formal Dress, choice of pant**



---

**Boys, grades: K-8 PANTS**

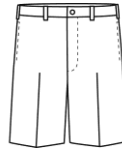
Boys Reg 3-7 or Slim 4-7	\$27.00
Boys Reg 8-16 or Slim 8-16	\$29.00
Boys Husky 8-32	\$33.00
Mens 27-32 Hemmed	\$34.00
Mens 33-50	\$34.00

Item #: 077000-962

Boys-Irvington Flat Front - Navy Twill (067)

**School Policy: Required for Formal Dress, choice of pant**

---

**Boys, grades: K-8 WALK SHORTS**

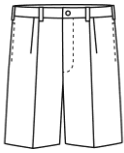
Boys Reg 3-7 or Slim 4-7	\$24.00
Boys Reg 8-16 or Slim 8-16	\$26.00
Boys Husky 8-32	\$28.00
Mens 27-32	\$30.00
Mens 33-50	\$30.00

Item #: 040720-962

Boys-Irvington Flat Front-Navy Twill (067)

**School Policy: May not be worn for Formal Dress**

---

**Boys, grades: K-8 WALK SHORTS**

Boys Reg 3-7 or Slim 4-7	\$24.00
Boys Reg 8-16 or Slim 8-16	\$26.00
Boys Husky 8-32	\$28.00
Mens 27-32	\$30.00
Mens 33-48	\$30.00

Item #: 040900-962

Boys-Hawthorne Plt Front-Navy Twill (067)

**School Policy: May not be worn for Formal Dress**

---

**Boys, grades: K-8 CARDIGAN**

Youth 2XS-XL	\$36.50
Adult S-XL	\$41.00
Adult 2XL-3XL	\$46.50

Item #: 063000-976

Heather Grey V-Neck (045)

Navy V-Neck (067)

**School Policy: Optional; may be worn with or without school logo**

---

**Boys, grades: K-8 CARDIGAN**

Youth 2XS-XL	\$40.25
Adult S-XL	\$44.75
Adult 2XL-3XL	\$50.25

Item #: 063000-Y8Y

Heather Grey V-Neck w/St. Mary of the Assumption fiberlok (045)

Navy V-Neck w/St. Mary of the Assumption fiberlok (067)

**School Policy: Optional; may be worn with or without school logo**

---

**Boys, grades: 6-8 CARDIGAN**

Youth 2XS-XL	\$36.50
Adult S-XL	\$41.00
Adult 2XL-3XL	\$46.50

Item #: 063000-976

Red V-Neck (095)

**School Policy: Optional; may be worn with or without school logo**

---

**Boys, grades: 6-8 CARDIGAN**

Youth 2XS-XL	\$40.25
Adult S-XL	\$44.75
Adult 2XL-3XL	\$50.25

Item #: 063000-Y8Y

Red V-Neck w/St. Mary of the Assumption fiberlok (095)

**School Policy: Optional; May be worn with or without school logo**

---

**Boys, grades: K-8 PULLOVER**

Youth 2XS-XL	\$32.00
Adult S-XL	\$36.50
Adult 2XL-3XL	\$41.25

Item #: 065000-976

Heather Grey V-Neck (045)

Navy V-Neck (067)

**School Policy: Optional; may be worn with or without school logo**

---

**Boys, grades: K-8 PULLOVER**

Youth 2XS-XL	\$35.75
Adult S-XL	\$40.25
Adult 2XL-3XL	\$45.00

Item #: 065000-Y8Y

Heather Grey V-Neck w/St. Mary of the Assumption fiberlok (045)

Navy V-Neck w/St. Mary of the Assumption fiberlok (067)

**School Policy: Optional; may be worn with or without school logo**

---

**Boys, grades: 6-8 PULLOVER**

Youth 2XS-XL	\$32.00
Adult S-XL	\$36.50
Adult 2XL-3XL	\$41.25

Item #: 065000-976

Red V-Neck (095)

**School Policy: Optional; may be worn with or without school logo**

---

**Boys, grades: 6-8 PULLOVER**

Youth 2XS-XL	\$35.75
Adult S-XL	\$40.25
Adult 2XL-3XL	\$45.00

Item #: 065000-Y8Y

Red V-Neck w/St. Mary of the Assumption fiberlok (095)

**School Policy: Optional; May be worn with or without school logo**

---

**Boys, grades: K-8 SWEATER VEST**

Youth 2XS-XL	\$28.00
Adult S-XL	\$31.00
Adult 2XL-3XL	\$37.50

Item #: 066000-976

Heather Grey V-Neck (045)

Navy V-Neck (067)

**School Policy: Optional; may be worn with or without school logo**

---

**Boys, grades: K-8 SWEATER VEST**

Youth 2XS-XL	\$31.75
Adult S-XL	\$34.75
Adult 2XL-3XL	\$41.25

Item #: 066000-Y8Y

Heather Grey V-Neck w/St. Mary of the Assumption fiberlok (045)

Navy V-Neck w/St. Mary of the Assumption fiberlok (067)

**School Policy: Optional; may be worn with or without school logo**

---

**Boys, grades: 6-8 SWEATER VEST**

Youth 2XS-XL	\$28.00
Adult S-XL	\$31.00
Adult 2XL-3XL	\$37.50

Item #: 066000-976

Red V-Neck (095)

**School Policy: Optional; may be worn with or without school logo**

---

**Boys, grades: 6-8 SWEATER VEST**

Youth 2XS-XL	\$31.75
Adult S-XL	\$34.75
Adult 2XL-3XL	\$41.25

Item #: 066000-Y8Y

Red V-Neck w/St. Mary of the Assumption fiberlok (095)

**School Policy: Optional; may be worn with or without school logo**

---

**Boys, grades: K-8 SWEATSHIRT**

Youth 2XS-XL	\$27.25
Adult S-3XL	\$31.50

Item #: 093000-Y8Y

Sweatshirt 1/4 Zip - Navy w/St. Mary of the Assumption fiberlok (067)

Sweatshirt 1/4 Zip - Oxford Grey w/St. Mary of the Assumption fi (759)

**School Policy: Required for 6-8 PE; not allowed for Formal Dress**

---

**Boys, grades: 6-8 SWEATPANT 9oz**

Youth 3XS-XL	\$23.50
Adult S-3XL	\$26.50

Item #: 090410-Y7Y

Oxford Grey w/St. Mary screen (759)

**School Policy: Required for PE; choice of sweatpant**

---

**Boys, grades: 6-8 SWEATPANT 9oz**

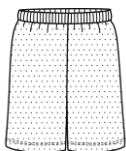
Youth XS-XL	\$23.50
Adult S-3XL	\$26.50

Item #: 090410-Y9Y

Navy w/St. Marys screen (067)

**School Policy: Required for PE; choice of sweatpant**

---

**Boys, grades: 6-8 GYM WEAR**

Youth 3XS-XL	\$18.00
Adult S-3XL	\$20.25

Item #: 005800-Y6Y

Shorts Mini Mesh-Navy w/St. Mary of the Assumption screen (067)

**School Policy: Required for PE**

---

**Boys, grades: K-8 JACKETS**

Youth XS-L	\$47.25
Adult XS-XL	\$54.75
Adult 2XL-3XL	\$57.25

Item #: 037000-Y8Y

Hooded Microfibre -Navy w/St. Mary of the Assumption fiberlok (067)

---

**Boys, grades: K-8 FLEECE JACKET**

Youth 2XS-XL \$41.75  
Adult S-3XL \$51.75

Item #: 054000-Y8Y

Navy Microfleece Jacket-front zipper w/St. Mary of the Assumptio (067)

---

**Boys, grades: K-8 ACCESSORIES**

Length 11-14-17in \$12.00

Item #: 0180PA-900

Tie Redi Knot-Adjustable-Navy (067)

**School Policy: Required for Formal Dress**

---

**Boys, grades: K-8 ACCESSORIES**

Sizes 20-30 \$20.00  
Sizes 32-48 \$21.00

Item #: 041500-900

Belt Braided Leather-Black (007)

**School Policy: Boys K-8; belt required for Formal Dress**

---

**Boys, grades: K-8 ACCESSORIES**

Length 44-48-54-57in \$12.00

Item #: 1800P0-900

Tie Four in Hand-Navy (067)

**School Policy: Required for Formal Dress**

**EVENTS**

School Selling Information:  
St. Mary of the Assumption School

Monday, June 04, 2018 from 2:30pm-6pm

20-Nov-17

**School Code: SH00CR**

0.0825

---

**Boys, grades: K-8 ACCESSORIES**

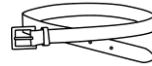
Length 11-14-17in \$10.50

Item #: 0180P0-900

Tie Clip on-Navy (067)

**School Policy: Required for Formal Dress**

---

**Boys, grades: K-8 ACCESSORIES**

Sizes 20-28 \$14.00  
Sizes 30-48 \$14.00

Item #: 041300-900

Belt Leather-Black (007)

Belt Leather -Navy (067)

**School Policy: Boys K-8; belt required for Formal Dress**

---

**Boys, grades: K-8 ACCESSORIES**

Sizes S-M-L-XL \$6.00

Item #: 047100-900

Crew Socks Cotton-Navy (067)

Crew Socks Cotton-White (119)