

ST. ANTHONY SCHOOL

School Code: SH00AB

2421 S. "C" Street ; Oxnard, CA 93033

Girls, grades: PS-4 JUMPERS



Girls 3-20	\$48.00
Girls Plus 6½-16½	\$49.00

Item #: 08811D-201

McDonald Plaid-Split front, knife pleats (470)

School Policy: Plaid Required for Mass Dress PS-K

Girls, grades: 1-8 SKIRTS



Girls 3-20	\$46.00
Girls Plus 6½-16½	\$46.50
Juniors 1-19	\$47.00
Juniors 21-25	\$47.00

Item #: 008680-201

McDonald Plaid-Center box pleat (470)

School Policy: Plaid Required for Mass Dress

Girls, grades: PS-8 SKORTS



Girls 3-16	\$47.00
Girls Plus 6½-16½	\$53.00
Juniors 1-19	\$53.00
Juniors 21-25	\$53.00

Item #: 035210-201

McDonald Plaid w/Tabs (470)

School Policy: Plaid Required for Mass Dress; Not allowed for P.E.

Girls, grades: 1-8 SKORTS



Girls 3-16	\$48.00
Juniors 1-19	\$54.00
Juniors 21-25	\$54.00

Item #: 035170-201

Pleated Skort-McDonald Plaid (470)

School Policy: May be worn for Mass Dress. Not allowed for P.E.

Girls, grades: PS-8 POLO



Youth 2XS-XL	\$23.05
Adult XS-2XL	\$25.05

Item #: 08200A-Y8A

GIRLS Red Jersey S/S w/St. Anthony fiberlok (095)

School Policy: May not be worn for Mass Dress

Girls, grades: PS-8 POLO



Youth 2XS-XL	\$23.05
Adult XS-2XL	\$25.05

Item #: 08200A-Y8A

GIRLS White Jersey S/S w/St. Anthony fiberlok (119)

School Policy: White polo Required for Mass Dress

Girls, grades: PS-8 POLO



Youth 2XS-XL	\$23.05
Adult S-3XL	\$25.05

Item #: 08300A-Y8A

Red Jersey S/S w/St. Anthony fiberlok (095)

School Policy: May not be worn for Mass Dress

Girls, grades: PS-8 POLO



Youth 2XS-XL	\$23.05
Adult S-3XL	\$25.05

Item #: 08300A-Y8A

White Jersey S/S w/St. Anthony fiberlok (119)

School Policy: White polo Required for Mass Dress

Girls, grades: PS-8 POLO

Youth 2XS-XL	\$25.35
Adult S-3XL	\$27.35

Item #: 08300C-Y8A

Red Jersey L/S w/St. Anthony fiberlok (095)

School Policy: May not be worn for Mass Dress

Girls, grades: PS-8 POLO

Youth 2XS-XL	\$25.35
Adult S-3XL	\$27.35

Item #: 08300C-Y8A

White Jersey L/S w/St. Anthony fiberlok (119)

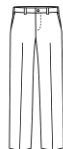
Girls, grades: PS-8 POLO

Youth 2XS-XL	\$28.20
Adult S-3XL	\$30.20

Item #: 08340A-Y8A

Performance Polo S/S-Red w/St. Anthony fiberlok (095)

Performance Polo S/S-White w/St. Anthony fiberlok (119)

Girls, grades: PS-8 PANTS

Girls 3-6 or Slim 4-6	\$28.00
Girls 7-16 or Slim 7-16	\$30.00
Girls Plus 6½-16½	\$34.00
Juniors 1-25	\$35.00

Item #: 040390-962

Girls-Irvington Flat Front-Grey Twill (041)

Girls, grades: PS-8 WALK SHORTS

Girls 3-6 or Slim 4-6	\$25.00
Girls 7-20 or Slim 7-16	\$27.00
Girls Plus 6½-16½	\$29.00
Juniors 1-27	\$31.00

Item #: 040820-962

Girls-Irvington Flat Front-Grey Twill (041)

School Policy: Required for P.E; May not be worn for Mass Dress

Girls, grades: PS-8 CARDIGAN

Youth 2XS-XL	\$40.75
Adult S-XL	\$45.25
Adult 2XL-3XL	\$50.75

Item #: 063000-Y8A

Red V-Neck w/St. Anthony fiberlok (095)

School Policy: May be worn for Mass Dress

Girls, grades: PS-8 PULLOVER

Youth 2XS-XL	\$36.25
Adult S-XL	\$40.75
Adult 2XL-3XL	\$45.50

Item #: 065000-Y8A

Red V-Neck w/St. Anthony fiberlok (095)

School Policy: Required for Mass Dress

Girls, grades: PS-8 SWEATER VEST

Youth 2XS-XL	\$32.25
Adult S-XL	\$35.25
Adult 2XL-3XL	\$41.75

Item #: 066000-Y8A

Red V-Neck w/St. Anthony fiberlok (095)

Girls, grades: PS-8 SWEATSHIRT

Youth 2XS-XL	\$27.60
Adult S-3XL	\$31.85

Item #: 093000-Y8A

Sweatshirt 1/4 Zip - Red w/St. Anthony fiberlok (095)

Girls, grades: PS-8 JACKETS

Youth XS-L	\$47.75
Adult XS-XL	\$55.25
Adult 2XL-3XL	\$57.75

Item #: 037000-Y8A

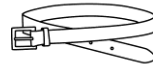
Hooded Microfibre -Red w/St. Anthony fiberlok (095)

Girls, grades: PS-8 FLEECE JACKET

Youth 2XS-XL	\$42.25
Adult S-3XL	\$52.25

Item #: 054000-Y8A

Red Microfleece Jacket-front zipper w/St. Anthony fiberlok (095)

Girls, grades: PS-1 ACCESSORIES

Sizes 20-32	\$14.00
-------------	---------

Item #: 041200-900

Belt Leather Velcro-Black (007)

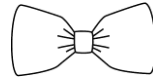
School Policy: Required with pants /shorts

Girls, grades: PS-8 ACCESSORIES

One size	\$6.15
----------	--------

Item #: 004880-201

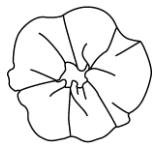
Padded Headband-McDonald Plaid (470)

Girls, grades: PS-8 ACCESSORIES

One size	\$5.15
----------	--------

Item #: 005070-201

Hairbow-McDonald Plaid (470)

Girls, grades: PS-8 ACCESSORIES

One size	\$6.15
----------	--------

Item #: 005090-201

Scrunchy-McDonald Plaid (470)

Girls, grades: PS-8 ACCESSORIES

Girls 3XS-XL	\$10.00
Juniors XS-2XL	\$12.00

Item #: 035850-995

Volley Shorts-Black (007)

School Policy: Suggested to be worn under skirts and jumpers

Girls, grades: PS-8 ACCESSORIES

Sizes 20-28	\$14.00
Sizes 30-48	\$14.00

Item #: 041300-900

Belt Leather-Black (007)

School Policy: Required with pants /shorts

Girls, grades: PS-8 ACCESSORIES

Sizes S-M-L-XL	\$6.00
----------------	--------

Item #: 047200-900

Bobby Socks/Triple Roll-White (119)

School Policy: No sport/ankle socks allowed.

Girls, grades: PS-8 ACCESSORIES

Sizes S-M-L-XL

\$7.00

Item #: 047300-900

Knee Hi Cable Knit-Black (007)

Knee-Hi Cable Knit-Red (095)

Knee-Hi Cable Knit-White (119)

Girls, grades: PS-8 ACCESSORIES

Sizes XS-XL

\$10.50

Item #: 047900-900

Tights Heavy Weight Opaque-Black (007)

Tights Heavy Weight Opaque-Red (095)

Tights Heavy Weight Opaque-White (119)

Boys, grades: PS-8 POLO

Youth 2XS-XL

\$23.05

Adult S-3XL

\$25.05

Item #: 08300A-Y8A

Red Jersey S/S w/St. Anthony fiberlok (095)

School Policy: May not be worn for Mass Dress

Boys, grades: PS-8 POLO

Youth 2XS-XL

\$23.05

Adult S-3XL

\$25.05

Item #: 08300A-Y8A

White Jersey S/S w/St. Anthony fiberlok (119)

School Policy: White polo Required for Mass Dress

Boys, grades: PS-8 POLO

Youth 2XS-XL

\$25.35

Adult S-3XL

\$27.35

Item #: 08300C-Y8A

Red Jersey L/S w/St. Anthony fiberlok (095)

School Policy: May not be worn for Mass Dress

Boys, grades: PS-8 POLO

Youth 2XS-XL

\$25.35

Adult S-3XL

\$27.35

Item #: 08300C-Y8A

White Jersey L/S w/St. Anthony fiberlok (119)

Boys, grades: PS-8 POLO

Youth 2XS-XL

\$28.20

Adult S-3XL

\$30.20

Item #: 08340A-Y8A

Performance Polo S/S-Red w/St. Anthony fiberlok (095)

Performance Polo S/S-White w/St. Anthony fiberlok (119)

Boys, grades: PS-8 PANTS

Boys Reg 3-7 or Slim 4-7

\$28.00

Boys Reg 8-16 or Slim 8-16

\$30.00

Boys Husky 8-32

\$34.00

Mens 27-32 Hemmed

\$35.00

Mens 33-48

\$35.00

Item #: 071000-962

Boys-Hawthorne Plt Front - Grey Twill (041)

School Policy: Required for Mass Dress; Choice of pant

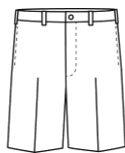
Boys, grades: PS-8 PANTS

Boys Reg 3-7 or Slim 4-7	\$28.00
Boys Reg 8-16 or Slim 8-16	\$30.00
Boys Husky 8-32	\$34.00
Mens 27-32 Hemmed	\$35.00
Mens 33-50	\$35.00

Item #: 077000-962

Boys-Irvington Flat Front - Grey Twill (041)

School Policy: Required for Mass Dress; Choice of pant

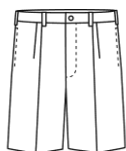
Boys, grades: PS-8 WALK SHORTS

Boys Reg 3-7 or Slim 4-7	\$25.00
Boys Reg 8-16 or Slim 8-16	\$27.00
Boys Husky 8-32	\$29.00
Mens 27-32	\$31.00
Mens 33-48	\$31.00

Item #: 040720-962

Boys-Irvington Flat Front-Grey Twill (041)

School Policy: Required for P.E.; choice of short; May not be worn for Mass Dress

Boys, grades: PS-8 WALK SHORTS

Boys Reg 3-7 or Slim 4-7	\$25.00
Boys Reg 8-16 or Slim 8-16	\$27.00
Boys Husky 8-32	\$29.00
Mens 27-32	\$31.00
Mens 33-48	\$31.00

Item #: 040900-962

Boys-Hawthorne Plt Front-Grey Twill (041)

School Policy: Required for P.E.; choice of short; May not be worn for Mass Dress

Boys, grades: PS-8 PULLOVER

Youth 2XS-XL	\$36.25
Adult S-XL	\$40.75
Adult 2XL-3XL	\$45.50

Item #: 065000-Y8A

Red V-Neck w/St. Anthony fiberlok (095)

School Policy: Required for Mass Dress

Boys, grades: PS-8 SWEATER VEST

Youth 2XS-XL	\$32.25
Adult S-XL	\$35.25
Adult 2XL-3XL	\$41.75

Item #: 066000-Y8A

Red V-Neck w/St. Anthony fiberlok (095)

Boys, grades: PS-8 SWEATSHIRT

Youth 2XS-XL	\$27.60
Adult S-3XL	\$31.85

Item #: 093000-Y8A

Sweatshirt 1/4 Zip - Red w/St. Anthony fiberlok (095)

Boys, grades: PS-8 JACKETS

Youth XS-L	\$47.75
Adult XS-XL	\$55.25
Adult 2XL-3XL	\$57.75

Item #: 037000-Y8A

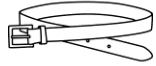
Hooded Microfibre -Red w/St. Anthony fiberlok (095)

Boys, grades: PS-8 FLEECE JACKET

Youth 2XS-XL	\$42.25
Adult S-3XL	\$52.25

Item #: 054000-Y8A

Red Microfleece Jacket-front zipper w/St. Anthony fiberlok (095)

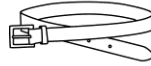
Boys, grades: PS-1 ACCESSORIES

Sizes 20-32 \$14.00

Item #: 041200-900

Belt Leather Velcro-Black (007)

School Policy: Required with pants /shorts

Boys, grades: PS-8 ACCESSORIESSizes 20-28 \$14.00
Sizes 30-48 \$14.00

Item #: 041300-900

Belt Leather-Black (007)

School Policy: Required w/pants/shorts

Boys, grades: PS-8 ACCESSORIES

Sizes S-M-L-XL \$6.00

Item #: 047100-900

Crew Socks Cotton-White (119)

School Policy: No sport/ankle socks allowed**No oversized clothing- no more than one size up to allow for growth. Skirt length no more than one credit card length above knee.****EVENTS**

School Selling Information:

St. Anthony School

Friday, July 27, 2018 from 3pm-6pm

08-Nov-18

School Code: SH00AB

0.0775