

ST. ANNE SCHOOL

School Code: NAFSTA

200 S. Pleasant Avenue ; Lodi, CA 95240

Girls, grades: K-4 JUMPERS



Girls 3-20	\$48.00
Girls Plus 6½-16½	\$49.00

Item #: 18632A-201

Wilson Plaid-Box Pleats (720)

School Policy: Required for Mass

Girls, grades: 5-8 SKIRTS



Girls 3-20	\$46.00
Girls Plus 6½-16½	\$46.50
Juniors 1-19	\$47.00
Juniors 21-25	\$47.00

Item #: 008680-201

Wilson Plaid-Center box pleat (720)

School Policy: Required for Mass

Girls, grades: K-8 SKORTS



Girls 3-20	\$47.00
Girls Plus 6½-16½	\$53.00
Juniors 1-19	\$53.00
Juniors 21-25	\$53.00

Item #: 035210-201

Wilson Plaid w/Tabs (720)

Girls, grades: K-8 BLOUSES



Youth 4-16	\$18.50
Adult S-2XL	\$19.50

Item #: 00080A-911

White BC S/S-Peter Pan Collar (119)

School Policy: Blouse or White Polo required for Mass

Girls, grades: K-8 POLO



Youth 2XS-XL	\$18.95
Adult XS-2XL	\$20.95

Item #: 08200A-973

GIRLS White Jersey S/S (119)

School Policy: Blouse or White Polo required for Mass

Girls, grades: K-8 POLO



Youth 2XS-XL	\$18.95
Adult S-3XL	\$20.95

Item #: 08300A-973

White Jersey S/S (119)

School Policy: Blouse or White Polo required for Mass

Girls, grades: K-8 POLO



Youth 2XS-XL	\$22.95
Adult S-3XL	\$24.95

Item #: 08300C-973

White Jersey L/S (119)

School Policy: Long sleeved Polo only allowed during second trimester

Girls, grades: 6-8 POLO



Youth 2XS-XL	\$18.95
Adult XS-2XL	\$20.95

Item #: 08200A-973

GIRLS Red Jersey S/S (095)

Girls, grades: 6-8 POLO

Youth 2XS-XL \$18.95
Adult S-3XL \$20.95

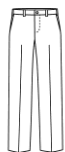
Item #: 08300A-973
Red Jersey S/S (095)

Girls, grades: 6-8 POLO

Youth 2XS-XL \$22.95
Adult S-3XL \$24.95

Item #: 08300C-973
Red Jersey L/S (095)

School Policy: Long sleeved Polo only allowed during second trimester

Girls, grades: K-8 PANTS

Girls 3-6 or Slim 4-6 \$28.00
Girls 7-20 or Slim 7-16 \$30.00
Girls Plus 6½-16½ \$34.00
Juniors 1-25 \$35.00

Item #: 040390-962
Girls-Irvington Flat Front-Navy Twill (067)
School Policy: Belts required with pants and shorts

Girls, grades: K-8 WALK SHORTS

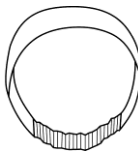
Girls 3-6X \$27.00
Girls 7-20 \$29.00
Girls Plus 6½-18½ \$31.00
Juniors 1-25 \$33.00

Item #: 040320-998
Navy Knee Length FF Stretch (067)
Belts required with pants and shorts. Shorts only allowed during first and third trimester.

Girls, grades: K-8 WALK SHORTS

Girls 3-6 or Slim 4-6 \$25.00
Girls 7-20 or Slim 7-16 \$27.00
Girls Plus 6½-16½ \$29.00
Juniors 1-27 \$31.00

Item #: 040820-962
Girls-Irvington Flat Front-Navy Twill (067)
Belts required with pants and shorts. Shorts only allowed during first and third trimester.

Girls, grades: K-8 ACCESSORIES

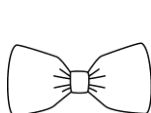
One size \$6.15

Item #: 004680-201
Elastic Back Headband-Wilson Plaid (720)

Girls, grades: K-8 ACCESSORIES

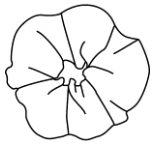
One size \$6.15

Item #: 004880-201
Padded Headband-Wilson Plaid (720)

Girls, grades: K-8 ACCESSORIES

One size \$5.15

Item #: 005070-201
Hairbow-Wilson Plaid (720)

Girls, grades: K-8 ACCESSORIES

One size

\$6.15

Item #: 005090-201

Scrunchy-Wilson Plaid (720)

Girls, grades: K-8 ACCESSORIES

One size

\$7.15

Item #: 005290-201

Streamer Bow-Wilson Plaid (720)

Girls, grades: K-8 ACCESSORIES

One size

\$10.00

Item #: 014150-900

Belt Stretch w/Magnetic Closure-Black (007)

Belt Stretch w/Magnetic Closure-Navy (067)

School Policy: Belts required with pants and shorts

Girls, grades: K-8 ACCESSORIES

Youth 2-12

\$12.50

Adult S-XL

\$15.00

Item #: 035340-909

Bike Shorts-Dk Navy (025)

Girls, grades: K-8 ACCESSORIES

Sizes 20-28

\$14.00

Sizes 30-48

\$14.00

Item #: 041300-900

Belt Leather-Black (007)

Belt Leather-Brown (013)

Belt Leather -Navy (067)

School Policy: Belts required with pants and shorts

Girls, grades: K-8 ACCESSORIES

Sizes S-M-L-XL

\$6.00

Item #: 047100-900

Crew Socks Cotton-White (119)

Girls, grades: K-8 ACCESSORIES

Sizes S-M-L-XL

\$6.00

Item #: 047200-900

Bobby Socks/Triple Roll-White (119)

Girls, grades: K-8 ACCESSORIES

Sizes S-M-L-XL

\$7.00

Item #: 047300-900

Knee-Hi Cable Knit-White (119)

Girls, grades: K-8 ACCESSORIES

Sizes XS-XL

\$10.50

Item #: 047900-900

Tights Heavy Weight Opaque-Navy (067)

Tights Heavy Weight Opaque-White (119)

Girls, grades: K-8 DOLL OUTFIT

One size

\$30.00

Item #: OFT109-201

Shift/Blouse/Bow Doll outfit- Wilson Plaid (720)

Boys, grades: K-8 POLO

Youth 2XS-XL

\$18.95

Adult S-3XL

\$20.95

Item #: 08300A-973

White Jersey S/S (119)

School Policy: Oxford or White Polo required for Mass

Boys, grades: K-8 POLO

Youth 2XS-XL

\$22.95

Adult S-3XL

\$24.95

Item #: 08300C-973

White Jersey L/S (119)

School Policy: Long sleeved Polo only allowed during second trimester

Boys, grades: 6-8 POLO

Youth 2XS-XL

\$18.95

Adult S-3XL

\$20.95

Item #: 08300A-973

Red Jersey S/S (095)

Boys, grades: 6-8 POLO

Youth 2XS-XL

\$22.95

Adult S-3XL

\$24.95

Item #: 08300C-973

Red Jersey L/S (095)

School Policy: Long sleeved Polo only allowed during second trimester

Boys, grades: K-8 SHIRTS

Youth 4-20

\$22.50

Adult S-3XL

\$26.00

Item #: 02900A-950

White Oxfordcloth-S/S (119)

School Policy: Oxford or White Polo required for Mass

Boys, grades: K-8 PANTS

Boys Reg 3-7 or Slim 4-7

\$28.00

Boys Reg 8-16 or Slim 8-16

\$30.00

Boys Husky 8-32

\$34.00

Mens 27-32 Hemmed

\$35.00

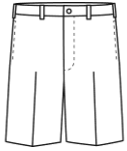
Mens 33-50

\$35.00

Item #: 077000-962

Boys-Irvington Flat Front - Navy Twill (067)

School Policy: Pants required for Mass, Belt required with Pants and Shorts

Boys, grades: K-8 WALK SHORTS

Boys Reg 3-7 or Slim 4-7	\$25.00
Boys Reg 8-16 or Slim 8-16	\$27.00
Boys Husky 8-32	\$29.00
Mens 27-32	\$31.00
Mens 33-50	\$31.00

Item #: 040720-962

Boys-Irvington Flat Front-Navy Twill (067)

Belts required with pants and shorts. Shorts only allowed during first and third trimester.

Boys, grades: K-8 ACCESSORIES

Sizes 20-28	\$14.00
Sizes 30-48	\$14.00

Item #: 041300-900

Belt Leather-Black (007)

Belt Leather-Brown (013)

Belt Leather -Navy (067)

School Policy: Belts required with pants and shorts

Boys, grades: K-8 DOLL OUTFIT

One size	\$30.00
----------	---------

Item #: 0FT109-201

Shift/Blouse/Bow Doll outfit- Wilson Plaid (720)

Boys, grades: K-8 ACCESSORIES

One size	\$10.00
----------	---------

Item #: 014150-900

Belt Stretch w/Magnetic Closure-Black (007)

Belt Stretch w/Magnetic Closure-Navy (067)

School Policy: Belts required with pants and shorts

Boys, grades: K-8 ACCESSORIES

Sizes S-M-L-XL	\$6.00
----------------	--------

Item #: 047100-900

Crew Socks Cotton-White (119)