

# OUR LADY OF REFUGE SCHOOL

School Code: H1R

3750 Commerce Road ; Orchard Lake, MI 48324

## Girls, grades: K-4 SHIFTS



Girls 3-20	\$48.00
Girls Plus 6½-16½	\$49.00

Item #: 011130-201

Campbell Plaid-Center box pleat (215)

**On Mass day must wear a peter pan blouse; other days an option of green polo**

## Girls, grades: 5-8 SKIRTS



Girls 3-16,20	\$46.00
Girls Plus 6½-16½	\$46.50
Juniors 1-19	\$47.00
Juniors 21-25	\$47.00

Item #: 008680-201

Campbell Plaid-Center box pleat (215)

## Girls, grades: 5-8 SKIRTS



Girls 3-20	\$52.00
Girls Plus 6½-16½	\$53.00
Juniors 1-19	\$53.00
Juniors 21-25	\$53.00

Item #: H1864B-201

Campbell Plaid-Hipstitched (215)

## Girls, grades: K-8 SKORTS



Girls 3-16,20	\$47.00
Girls Plus 6½-16½	\$53.00
Juniors 1-19	\$53.00
Juniors 21-25	\$53.00

Item #: 035210-201

Campbell Plaid w/Tabs (215)

## Girls, grades: K-5 BLOUSES



Youth 2-16	\$22.75
Adult S-3XL	\$23.75

Item #: 00080A-HR9

Blue S/S-Peter Pan Collar w/OLO Refuge fiberlok (009)

**Required on Mass day only. Green polo or gym wear are required other days**

## Girls, grades: K-5 BLOUSES



Youth 2-16	\$25.75
Adult S-3XL	\$26.75

Item #: 00080C-HR9

Blue L/S-Peter Pan Collar w/OLO Refuge fiberlok (009)

**Required on Mass day only. Green polo or gym wear are required other days**

## Girls, grades: K-8 POLO



Youth 2XS-XL	\$21.45
Adult S-3XL	\$23.45

Item #: 08300A-HX6

Green Jersey S/S w/Our Lady of Refuge screen (136)

**K-8 required to wear daily; except for Mass Day.**

## Girls, grades: K-8 POLO



Youth 2XS-XL	\$25.45
Adult S-3XL	\$27.45

Item #: 08300C-HX6

Green Jersey L/S w/Our Lady of Refuge screen (136)

**K-8 required to wear daily; except for Mass Day.**

---

**Girls, grades: K-8 SHIRTS**

Youth 4-20	\$26.75
Adult S-3XL	\$30.25

Item #: 02900A-HR9

Blue Oxfordcloth-S/S w/OLO Refuge fiberlok (009)

**K-5 boys required for Mass Day. 6-8 Boys & Girls Required for Mass Day w/logo**

---

**Girls, grades: K-8 SHIRTS**

Youth 4-20	\$28.75
Adult S-3XL	\$32.75

Item #: 02900C-HR9

Blue Oxfordcloth-L/S w/OLO Refuge fiberlok (009)

**K-5 boys required for Mass Day. 6-8 Boys & Girls Required for Mass Day w/logo**

---

**Girls, grades: 8 SHIRTS**

Youth 4-20	\$26.75
Adult S-3XL	\$30.25

Item #: 02900A-HR9

Navy/White Pinstripe Oxfordcloth S/S w/OLO Refuge fiberlok (147)

**While Supplies Last - 2nd option must have logo**

---

**Girls, grades: 8 SHIRTS**

Youth 4-20	\$28.75
Adult S-XL	\$32.75

Item #: 02900C-HR9

Navy/White Pinstripe Oxfordcloth L/S w/OLO Refuge fiberlok (147)

**While Supplies Last - 2nd option must have logo**

---

**Girls, grades: K Only WALK SHORTS**

Toddler 3-4	\$17.50
-------------	---------

Item #: 044450-965

Drawstring Pull on-Navy Twill (069)

**While supplies last; All sales final**

---

**Girls, grades: K-6 WALK SHORTS**

Girls 3-6X	\$27.00
Girls 7-20	\$29.00
Girls Plus 6½-18½	\$31.00
Juniors 1-25	\$33.00

Item #: 040320-998

Navy Knee Length FF Stretch (067)

---

**Girls, grades: K-6 WALK SHORTS**

Girls 3-6 or Slim 4-6	\$25.00
Girls 7-20 or Slim 7-16	\$27.00
Girls Plus 6½-16½	\$29.00
Juniors 1-27	\$31.00

Item #: 040820-962

Girls-Irvington Flat Front-Navy Twill (067)

---

**Girls, grades: K-8 PULLOVER**

Youth 2XS-XL	\$40.50
Adult S-XL	\$45.00
Adult 2XL-3XL	\$49.75

Item #: 065000-HX9

Navy V-Neck w/OLO Refuge embroidery (067)

**Sweater or Sweater Vest required w/oxford or peter pan blouse on Mass Day; May 1-Oct 1**

---

**Girls, grades: K-8 SWEATER VEST**

Youth 2XS-XL	\$36.50
Adult S-XL	\$39.50
Adult 2XL-3XL	\$46.00

Item #: 066000-HX9

Navy V-Neck w/OLO Refuge embroidery (067)

**Sweater or Sweater Vest required w/oxford or peter pan blouse on Mass Day; May 1-Oct 1**

---

**Girls, grades: K-8 SWEATSHIRT**

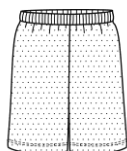
Youth 2XS-XL	\$26.00
Adult S-3XL	\$30.25

Item #: 093000-HX7

Sweatshirt 1/4 Zip - Navy w/OLO Refuge screen (067)

**Can be worn in class;not on Wednesday/Mass day**

---

**Girls, grades: K-8 GYM WEAR**

Youth 3XS-XL	\$18.50
Adult S-2XL	\$20.75

Item #: 005800-HR5

Shorts Nylon Mini Mesh-Navy w/OL Refuge Screen (067)

**Required**

---

**Girls, grades: K-8 GYM WEAR**

Youth XS-XL	\$12.50
Adult S-3XL	\$13.50

Item #: 053800-HX8

T-Shirt 100C-Ash w/OLO Refuge screen (002)

**Required for gym**

---

**Girls, grades: K-8 SWEATSHIRT 9oz**

Youth 3XS-XL	\$23.00
Adult S-3XL	\$26.00

Item #: 090000-HX7

Navy Crew Neck w/OLO Refuge screen (067)

**Gym Day**

---

**Girls, grades: K-8 SWEATPANT 9oz**

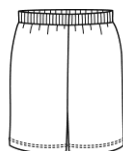
Youth 3XS-XL	\$23.00
Adult S-2XL	\$26.00

Item #: 090410-HR5

Navy w/OL Refuge Screen (067)

**Gym Day**

---

**Girls, grades: K-8 GYM WEAR**

Youth XS-L	\$14.50
Adult S-3XL	\$16.50

Item #: 009910-HR5

Shorts Jersey Knit-Navy w/OL Refuge screen (067)

**2nd option for required gym shorts**

---

**Girls, grades: K-8 FLEECE PULLOVER**

Youth 2XS-XL	\$38.50
Adult S-3XL	\$47.50

Item #: 054200-HX9

Unisex Navy Microfleece -1/4 zip w/OLO Refuge embroidery (067)

**Can be worn in class with a collared shirt;not on Mass Day; We have temporarily sold out of size YXS This size will begin shipping again in December**

---

**Girls, grades: K-8 FLEECE JACKET**

Youth 2XS-XL \$46.50  
Adult S-3XL \$56.50

Item #: 054000-HX9

Navy Microfleece Jacket-front zipper w/OLO Refuge embroidery (067)

**Can be worn in class with a collared shirt;not on Mass Day**

---

**Girls, grades: K-4 ACCESSORIES**

Sizes XS-XL \$10.50

Item #: 047900-900

Tights Heavy Weight Opaque-White (119)

**Youth S-XL sizes only**

---

**Girls, grades: K-4 ACCESSORIES**

Sizes Petite- Avg-Tall \$8.50

Item #: 047950-900

Tights Microfiber Opaque-White (119)

**New Style- Junior sizes only**

---

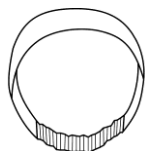
**Girls, grades: K-5 ACCESSORIES**

Sizes S-M-L-XL \$11.50

Item #: 002170-201

Anklet w/trim-Campbell Plaid (215)

---

**Girls, grades: K-8 ACCESSORIES**

One size \$6.15

Item #: 004680-201

Elastic Back Headband-Campbell Plaid (215)

---

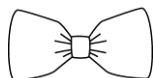
**Girls, grades: K-8 ACCESSORIES**

One size \$6.15

Item #: 004880-201

Padded Headband-Campbell Plaid (215)

---

**Girls, grades: K-8 ACCESSORIES**

One size \$5.15

Item #: 005070-201

Hairbow-Campbell Plaid (215)

---

**Girls, grades: K-8 ACCESSORIES**

One size \$6.15

Item #: 005090-201

Scrunchy-Campbell Plaid (215)

---

**Girls, grades: K-8 ACCESSORIES**

One size \$7.15

Item #: 005290-201

Streamer Bow-Campbell Plaid (215)

---

**Girls, grades: K-8 ACCESSORIES**

Youth 2-12 \$18.50  
Adult S-XL \$22.50

Item #: 035330-909

Leggings-Dk Navy (025)

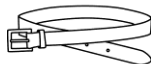
---

**Girls, grades: K-8 ACCESSORIES**

Youth 2-12 \$12.50  
Adult S-XL \$15.00

Item #: 035340-909  
Bike Shorts-Dk Navy (025)

---

**Girls, grades: K-8 ACCESSORIES**

Sizes 20-28 \$14.00  
Sizes 30-48 \$14.00

Item #: 041300-900  
Belt Leather-Black (007)  
Belt Leather -Navy (067)

---

**Girls, grades: K-8 ACCESSORIES**

Sizes 20-30 \$20.00  
Sizes 32-48 \$21.00

Item #: 041500-900  
Belt Braided Leather-Black (007)  
**A belt is required with pants & shorts**

---

**Girls, grades: K-8 ACCESSORIES**

Sizes S-M-L-XL \$7.00

Item #: 047300-900  
Knee-Hi Cable Knit-Navy (067)  
Knee-Hi Cable Knit-White (119)  
**No sport/logo socks allowed**

---

**Girls, grades: K-8 ACCESSORIES**

Sizes S-M-L-XL \$7.00

Item #: 047400-900  
Knee-Hi Opaque-Navy (067)  
Knee-Hi Opaque-White (119)  
**No sport/ logo socks allowed**

---

**Girls, grades: K-8 ACCESSORIES**

Sizes XS-XL \$10.50

Item #: 047900-900  
Tights Heavy Weight Opaque-Navy (067)  
**Youth Sizes S-XL only**

---

**Girls, grades: K-8 ACCESSORIES**

Sizes Petite- Avg-Tall \$8.50

Item #: 047950-900  
Tights Microfiber Opaque-Navy (067)  
**New Style- Junior sizes only**

---

**Boys, grades: K-8 POLO**

Youth 2XS-XL \$21.45  
Adult S-3XL \$23.45

Item #: 08300A-HX6  
Green Jersey S/S w/Our Lady of Refuge screen (136)  
**K-8 required to wear daily;except for Mass Day.**

---

**Boys, grades: K-8 POLO**

Youth 2XS-XL \$25.45  
Adult S-3XL \$27.45

Item #: 08300C-HX6

Green Jersey L/S w/Our Lady of Refuge screen (136)

**K-5 can wear all days except Mass Day; 6-8 grade Friday only**

---

**Boys, grades: K-8 SHIRTS**

Youth 4-20 \$26.75  
Adult S-3XL \$30.25

Item #: 02900A-HR9

Blue Oxfordcloth-S/S w/OLO Refuge fiberlok (009)

**K-5 boys required for Mass Day. 6-8 Boys & Girls Required for Mass Day w/logo**

---

**Boys, grades: K-8 SHIRTS**

Youth 4-20 \$28.75  
Adult S-3XL \$32.75

Item #: 02900C-HR9

Blue Oxfordcloth-L/S w/OLO Refuge fiberlok (009)

**K-5 boys required for Mass Day. 6-8 Boys & Girls Required for Mass Day w/logo**

---

**Boys, grades: 8 SHIRTS**

Youth 4-20 \$26.75  
Adult S-3XL \$30.25

Item #: 02900A-HR9

Navy/White Pinstripe Oxfordcloth S/S w/OLO Refuge fiberlok (147)

**While Supplies Last - 2nd option must have logo**

---

**Boys, grades: 8 SHIRTS**

Youth 4-20 \$28.75  
Adult S-XL \$32.75

Item #: 02900C-HR9

Navy/White Pinstripe Oxfordcloth L/S w/OLO Refuge fiberlok (147)

**While Supplies Last - 2nd option must have logo**

---

**Boys, grades: K Only PANTS**

Toddler 3-4 \$20.00

Item #: 044110-965

Drawstring Pull on-Navy Twill (069)

**While supplies last; All sales final**

---

**Boys, grades: K Only PANTS**

Youth 7-16 \$24.00  
Youth 2-6 \$22.00

Item #: 044160-965

Pull on-Navy Twill (069)

**Sizes 2-5 Run Small**

---

**Boys, grades: K-6 PANTS**

Boys Reg 3-7 or Slim 4-7 \$28.00

Boys Reg 8-16 or Slim 8-16 \$30.00

Boys Husky 8-32 \$34.00

Mens 27-32 Hemmed \$35.00

Mens 33-48 \$35.00

Item #: 071000-962

Boys-Hawthorne Plt Front - Navy Twill (067)

---

**Boys, grades: K-6 PANTS**

Boys Reg 3-7 or Slim 4-7	\$28.00
Boys Reg 8-16 or Slim 8-16	\$30.00
Boys Husky 8-32	\$34.00
Mens 27-32 Hemmed	\$35.00
Mens 33-50	\$35.00

Item #: 077000-962

Boys-Irvington Flat Front - Navy Twill (067)

---

**Boys, grades: 7-8 PANTS**

Boys Reg 3-7 or Slim 4-7	\$28.00
Boys Reg 8-16 or Slim 8-16	\$30.00
Boys Husky 8-32	\$34.00
Mens 27-32 Hemmed	\$35.00
Mens 33-52	\$35.00

Item #: 077000-962

Boys-Irvington Flat Front - Khaki Twill (049)

---

**Boys, grades: K Only WALK SHORTS**

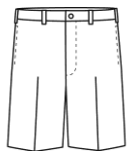
Youth 7-16	\$22.00
Youth 2-6	\$20.00

Item #: 044600-965

Pull on-Navy Twill (069)

**Permitted 1st day of school-Nov.1 and May 1-Last day of school; Sizes 2-5 Run Small**

---

**Boys, grades: 7-8 WALK SHORTS**

Boys Reg 3-7 or Slim 4-7	\$25.00
Boys Reg 8-16 or Slim 8-16	\$27.00
Boys Husky 8-32	\$29.00
Mens 27-32	\$31.00
Mens 33-52	\$31.00

Item #: 040720-962

Boys-Irvington Flat Front-Khaki Twill (049)

---

**Boys, grades: 7-8 PANTS**

Boys Reg 8-16 or Slim 8-16	\$30.00
Boys Husky 8-32	\$34.00
Mens 27-32 Hemmed	\$35.00
Mens 33-48	\$35.00

Item #: 071000-962

Boys-Hawthorne Plt Front - Khaki Twill (049)

---

**Boys, grades: K Only WALK SHORTS**

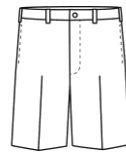
Toddler 3-4	\$17.50
-------------	---------

Item #: 044450-965

Drawstring Pull on-Navy Twill (069)

**While supplies last; All sales final**

---

**Boys, grades: K-6 WALK SHORTS**

Boys Reg 3-7 or Slim 4-7	\$25.00
Boys Reg 8-16 or Slim 8-16	\$27.00
Boys Husky 8-32	\$29.00
Mens 27-32	\$31.00
Mens 33-50	\$31.00

Item #: 040720-962

Boys-Irvington Flat Front-Navy Twill (067)

---

**Boys, grades: K Only PULL ON SHORT**

Toddler 2-4	\$15.75
-------------	---------

Item #: 035290-965

Pull on Short-Navy Twill (069)

**Permitted 1st day of school-Nov.1 & May1-Last day of school; While supplies last; All sales final**

---

**Boys, grades: K-8 PULLOVER**

Youth 2XS-XL	\$40.50
Adult S-XL	\$45.00
Adult 2XL-3XL	\$49.75

Item #: 065000-HX9

Navy V-Neck w/OLO Refuge embroidery (067)

**Sweater or Sweater Vest required w/oxford or peter pan blouse on Mass Day; May 1-Oct 1**

---

**Boys, grades: K-8 SWEATER VEST**

Youth 2XS-XL	\$36.50
Adult S-XL	\$39.50
Adult 2XL-3XL	\$46.00

Item #: 066000-HX9

Navy V-Neck w/OLO Refuge embroidery (067)

**Sweater or Sweater Vest required w/oxford or peter pan blouse on Mass Day; May 1-Oct 1**

---

**Boys, grades: K-8 SWEATSHIRT 9oz**

Youth 3XS-XL	\$23.00
Adult S-3XL	\$26.00

Item #: 090000-HX7

Navy Crew Neck w/OLO Refuge screen (067)

**Gym Day**

---

**Boys, grades: K-8 SWEATSHIRT**

Youth 2XS-XL	\$26.00
Adult S-3XL	\$30.25

Item #: 093000-HX7

Sweatshirt 1/4 Zip - Navy w/OLO Refuge screen (067)

**Can be worn in class;not on Wednesday/Mass day**

---

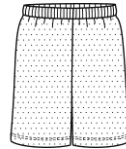
**Boys, grades: K-8 SWEATPANT 9oz**

Youth 3XS-XL	\$23.00
Adult S-2XL	\$26.00

Item #: 090410-HR5

Navy w/OL Refuge Screen (067)

---

**Boys, grades: K-8 GYM WEAR**

Youth 3XS-XL	\$18.50
Adult S-2XL	\$20.75

Item #: 005800-HR5

Shorts Nylon Mini Mesh-Navy w/OL Refuge Screen (067)

**Required**

---

**Boys, grades: K-8 GYM WEAR**

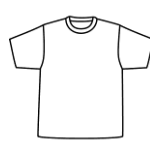
Youth XS-L	\$14.50
Adult S-3XL	\$16.50

Item #: 009910-HR5

Shorts Jersey Knit-Navy w/OL Refuge screen (067)

**REQUIRED**

---

**Boys, grades: K-8 GYM WEAR**

Youth XS-XL	\$12.50
Adult S-3XL	\$13.50

Item #: 053800-HX8

T-Shirt 100C-Ash w/OLO Refuge screen (002)

**Required for gym**



---

**Boys, grades: K-8 FLEECE PULLOVER**

Youth 2XS-XL \$38.50  
Adult S-3XL \$47.50

Item #: 054200-HX9

Unisex Navy Microfleece -1/4 zip w/OLO Refuge embroidery (067)

**Can be worn in class with a collared shirt;not on Mass Day; We have temporarily sold out of size YXS This size will begin shipping again in December**

---

**Boys, grades: K-8 FLEECE JACKET**

Youth 2XS-XL \$46.50  
Adult S-3XL \$56.50

Item #: 054000-HX9

Navy Microfleece Jacket-front zipper w/OLO Refuge embroidery (067)

**Can be worn in class with a collared shirt;not on Mass Day**

---

**Boys, grades: K-8 ACCESSORIES**

Sizes 20-28 \$14.00  
Sizes 30-48 \$14.00

Item #: 041300-900

Belt Leather-Black (007)

Belt Leather -Navy (067)

**A belt is required with pants & shorts**

---

**Boys, grades: K-8 ACCESSORIES**

Sizes 20-30 \$20.00  
Sizes 32-48 \$21.00

Item #: 041500-900

Belt Braided Leather-Black (007)

**A belt is required with pants & shorts**

---

**Boys, grades: K-8 ACCESSORIES**

Sizes S-M-L-XL \$6.00

Item #: 047100-900

Crew Socks Cotton-Navy (067)

**No sport/logo socks allowed**

---

**Boys, grades: 4-8 ACCESSORIES**

Length 11-14-17in \$12.50

Item #: 0180P0-201

Tie Clip on-Campbell Plaid (215)

**Campbell plaid, navy, or dk green tie required for Wednesday Mass Day**

---

**Boys, grades: 4-8 ACCESSORIES**

Length 11-14-17in \$10.50

Item #: 0180P0-900

Tie Clip on-Navy (067)

Tie Clip on-Green (136)

**Campbell plaid, navy or dk. green tie required for Wednesdays Mass Day**

---

**Boys, grades: 4-8 ACCESSORIES**

Length 44-48-54-57in \$14.00

Item #: 1800P0-201

Tie Four in Hand-Campbell Plaid (215)

**Campbell plaid, Navy or Dk Green tie required for Wednesday Mass Day**

---

**Boys, grades: 4-8 ACCESSORIES**



Length 44-48-54-57in      \$12.00

Item #: 1800P0-900

Tie Four in Hand-Navy (067)

**Campbell plaid, Navy or Dk Green tie required for  
Wednesday Mass Day**

29-Oct-18

**School Code: H1R**

0.06