

WHITESBURG CHRISTIAN ACADEMY

School Code: BAWBCA

7290 Whitesburg Drive SE ; Huntsville, AL 35802

Girls, grades: PK-4 DRESSES



Youth 2XS-XL \$33.00

Item #: 0380B0-K2W

Jersey Polo Dress -Ash w/Whitesburg embroidery (002)

School Policy: Bike shorts are required under garment. This garment is a different fit with a longer waist and no side pockets.

Girls, grades: PK-4 DRESSES



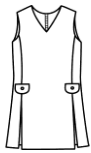
Youth 2XS-XL \$28.00

Item #: 0380B0-K3W

Jersey Polo Dress -Black w/Whitesburg embroidery (007)

School Policy: Bike shorts are required under garment.

Girls, grades: PK-6 SHIFTS



Girls 3-20 \$48.00
Girls Plus 6½-16½ \$49.00

Item #: 018390-706

Arlington Plaid-Center front box pleat (163)

School Policy: May be worn with peterpan blouse or polo.

Girls, grades: PK-12 SKIRTS



Girls 3-16 \$46.00
Girls Plus 6½-16½ \$46.50
Juniors 1-19 \$47.00
Juniors 21-25 \$47.00

Item #: 008680-706

Arlington Plaid-Center box pleat (163)

Girls, grades: PK-12 SKIRTS

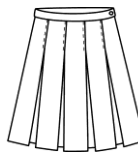


Girls 3-18 \$42.00
Girls Plus 6½-16½ \$42.50
Juniors 1-19 \$43.00
Juniors 21-25 \$43.00

Item #: 008680-931

Khaki Gabardine-Box pleat (068)

Girls, grades: 4-12 SKIRTS

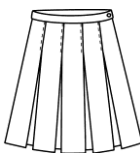


Girls 3-18 \$46.00
Girls Plus 6½-16½ \$47.00
Juniors 1-19 \$47.00
Juniors 21-25 \$47.00

Item #: H08360-931

Black Gabardine-Hipstitched box pleat (007)

Girls, grades: 4-12 SKIRTS



Girls 3-16 \$46.00
Girls Plus 6½-16½ \$47.00
Juniors 1-19 \$47.00
Juniors 21-25 \$47.00

Item #: H08360-935

Heather Grey Gabardine-Hipstitched box pleat (045)

Girls, grades: PK-K SKORTS



Girls 2-3-4-5-6-7-8 \$21.50

Item #: 035180-965

Pull On Skort-Khaki Twill - No Tabs (068)

Girls, grades: PK-6 SKORTS

Girls 3-16	\$48.00
Juniors 1-19	\$54.00
Juniors 21-25	\$54.00

Item #: 035170-706

Pleated Skort-Arlington Plaid (163)

Girls, grades: PK-6 BLOUSES

Youth 2-16	\$18.50
Adult S-2XL	\$19.50

Item #: 00080A-911

White BC S/S-Peter Pan Collar (119)

Girls, grades: PK-3 POLO

Youth 2XS-XL	\$23.95
Adult XS-2XL	\$25.95

Item #: 08220A-K2W

GIRLS White Pique S/S w/Whitesburg embroidery (119)

Girls, grades: PK-3 POLO

Youth 2XS-XL	\$27.95
Adult S-3XL	\$29.95

Item #: 08700C-K2W

White Pique L/S w/Whitesburg embroidery (119)

Girls, grades: PK-6 SKORTS

Girls 2	\$33.00
Girls 3-16	\$33.00
Juniors 1-19	\$35.00

Item #: 035170-965

Pleated Skort-Khaki Twill (068)

Girls, grades: PK-6 BLOUSES

Youth 2-16	\$21.50
Adult S-2XL	\$22.50

Item #: 00080C-911

White BC L/S-Peter Pan Collar (119)

Girls, grades: PK-3 POLO

Youth 2XS-XL	\$23.95
Adult S-3XL	\$25.95

Item #: 08700A-K2W

White Pique S/S w/Whitesburg embroidery (119)

Girls, grades: PK-12 POLO

Youth 2XS-XL	\$28.95
Adult S-3XL	\$30.95

Item #: 08340A-K3W

Performance Polo S/S-Black w/Whitesburg embroidery (007)

Performance Polo S/S-Purple w/Whitesburg embroidery (089)

School Policy: May not be worn with black bottoms.

Girls, grades: PK-12 POLO

Youth 2XS-XL	\$23.95
Adult S-3XL	\$25.95

Item #: 08700A-K2W

Ash Pique S/S w/Whitesburg embroidery (002)

Girls, grades: PK-12 POLO

Youth 2XS-XL	\$23.95
Adult S-3XL	\$25.95

Item #: 08700A-K3W

Black Pique S/S w/Whitesburg embroidery (007)

Purple S/S Pique Knit w/Whitesburg embroidery (089)

School Policy: May not be worn with black bottoms.

Girls, grades: PK-12 POLO

Youth 2XS-XL	\$27.95
Adult S-3XL	\$29.95

Item #: 08700C-K2W

Ash Pique L/S w/Whitesburg embroidery (002)

Girls, grades: PK-12 POLO

Youth 2XS-XL	\$27.95
Adult S-3XL	\$29.95

Item #: 08700C-K3W

Black Pique L/S w/Whitesburg embroidery (007)

Purple L/S Pique Knit w/Whitesburg embroidery (089)

School Policy: May not be worn with black bottoms.

Girls, grades: K-12 POLO

Youth 2XS-XL	\$23.95
Adult XS-2XL	\$25.95

Item #: 08220A-K2W

GIRLS Ash Pique S/S w/Whitesburg embroidery (002)

Girls, grades: K-12 POLO

Youth 2XS-XL	\$23.95
Adult XS-2XL	\$25.95

Item #: 08220A-K3W

GIRLS Black Pique S/S w/Whitesburg embroidery (007)

School Policy: May not be worn with black bottoms.

Girls, grades: K-12 POLO

Youth 2XS-XL	\$23.95
Adult XS-2XL	\$25.95

Item #: 08220A-K3W

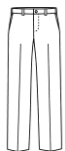
GIRLS Purple Pique S/S w/Whitesburg embroidery (089)

Girls, grades: PK-K PANTS

Youth 2-6	\$22.00
Youth 7-20	\$24.00

Item #: 044160-965

Pull on-Khaki Twill (068)

Girls, grades: PK-12 PANTS

Girls 3-6 or Slim 4-6	\$28.00
Girls 7-20 or Slim 7-16	\$30.00
Girls Plus 6½-16½	\$34.00
Juniors 1-25	\$35.00
Girls 7-16 or Slim 7-16	\$30.00

Item #: 040390-962

Girls-Irvington Flat Front-Black Twill (007)

Girls-Irvington Flat Front-Khaki Twill (049)

Girls, grades: PK-12 WALK SHORTS

Girls 3-6 or Slim 4-6	\$25.00
Girls 7-16 or Slim 7-16	\$27.00
Girls Plus 6½-16½	\$29.00
Juniors 1-27	\$31.00
Girls 7-20 or Slim 7-16	\$27.00

Item #: 040820-962

Girls-Irvington Flat Front-Black Twill (007)

Girls-Irvington Flat Front-Khaki Twill (049)

Girls, grades: PK-12 CARDIGAN

Youth 2XS-XL	\$52.30
Adult S-3XL	\$57.30

Item #: 063500-K8W

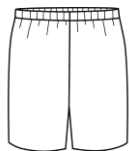
V-Neck- Black w/White Arm Stripes w/Whitesburg W emblem (843)

Girls, grades: PK-12 SWEATSHIRT

Youth 2XS-XL	\$28.50
Adult S-3XL	\$32.75

Item #: 093000-K3W

Sweatshirt 1/4 Zip - Black w/Whitesburg embroidery (007)

Girls, grades: PK-K WALK SHORTS

Youth 2-6	\$20.00
Youth 7-20	\$22.00

Item #: 044600-965

Pull on-Khaki Twill (068)

Girls, grades: PK-12 CARDIGAN

Youth 2XS-XL	\$41.50
Adult S-XL	\$51.25
Adult 2XL-3XL	\$51.25

Item #: 011000-K2W

Zippered Cardigan - Heather Grey w/Whitesburg embroidery (045)

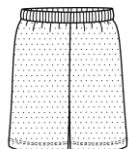
50% Off! While Supplies Last; All Sales are Final.

Girls, grades: PK-12 SWEATSHIRT

Youth 2XS-XL	\$28.50
Adult S-3XL	\$32.75

Item #: 093000-K2W

Sweatshirt 1/4 Zip - Oxford Grey w/Whitesburg embroidery (759)

Girls, grades: 7-8 GYM WEAR

Youth XS-XL	\$18.50
Adult S-3XL	\$20.75

Item #: 005800-K4W

Shorts Nylon Mini Mesh-Black w/Whitesburg screen (007)

School Policy: Required for P.E.

Girls, grades: 7-8 GYM WEAR

Youth XS-XL	\$18.00
Adult S-3XL	\$19.00

Item #: 053700-K5W

Unisex Wicking Crew T-Shirt 100P-Oxford Grey w/Whitesburg screen (759)

School Policy: Required for P.E.

Girls, grades: PK-12 JACKETS

Youth XS-L	\$48.50
Adult XS-XL	\$56.00
Adult 2XL-3XL	\$58.50

Item #: 037000-K3W

Hooded Microfibre -Black w/Whitesburg embroidery (007)

Girls, grades: PK-12 JACKETS

Youth S-L	\$25.00
Adult S-XL	\$25.50
Adult 2XL-3XL	\$29.50

Item #: 046000-K3W

Wind Anorak 100N-Black w/Whitesburg embroidery (007)

Girls, grades: PK-12 JACKETS

Youth XS-XL	\$37.50
Adult XS-XL	\$44.00
Adult 2XL	\$46.25
Adult 3XL	\$50.75

Item #: 0ST241-KYZ

Sport-Wick Fleece Full Zip Jacket -Dk Smoke Grey /Whitesburg emb (026)

Girls, grades: PK-12 FLEECE JACKET

Youth 2XS-XL	\$43.00
Adult S-2XL	\$53.00

Item #: 054000-K3W

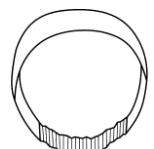
Black Microfleece Jacket-front zipper w/Whitesburg embroider (007)

Girls, grades: PK-12 FLEECE JACKET

Youth 2XS-XL	\$43.00
Adult S-3XL	\$53.00

Item #: 054000-KYZ

Heather Grey Microfleece Jacket-front zipper w/Whitesburg embroi (045)

Girls, grades: PK-12 ACCESSORIES

One size	\$6.15
----------	--------

Item #: 004680-706

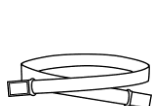
Elastic Back Headband-Arlington Plaid (163)

Girls, grades: PK-12 ACCESSORIES

One size	\$6.15
----------	--------

Item #: 005090-706

Scrunchy-Arlington Plaid (163)

Girls, grades: PK-12 ACCESSORIES

One size	\$10.00
----------	---------

Item #: 014150-900

Belt Stretch w/Magnetic Closure-Black (007)

Belt Stretch w/Magnetic Closure-Khaki (049)

Girls, grades: PK-12 ACCESSORIES

Youth 2-12	\$12.50
Adult S-XL	\$15.00

Item #: 035340-909

Bike Shorts-Black (007)

Girls, grades: PK-12 ACCESSORIES

Sizes S-M-L-XL

\$6.00

Item #: 047100-900

Crew Socks Cotton-White (119)

Girls, grades: PK-12 ACCESSORIES

Sizes S-M-L-XL

\$7.00

Item #: 047300-900

Knee Hi Cable Knit-Black (007)

Knee-Hi Cable Knit-White (119)

Girls, grades: PK-12 ACCESSORIES

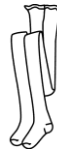
Sizes S-M-L-XL

\$7.00

Item #: 047400-900

Knee-Hi Opaque-Black (007)

Knee-Hi Opaque-White (119)

Girls, grades: PK-12 ACCESSORIES

Sizes S-XL

\$11.50

Item #: 047800-900

Tights Heavy Weight Ribbed-Black (007)

Tights Heavy Weight Ribbed-White (119)

While supplies last; All sales final

Girls, grades: PK-12 ACCESSORIES

Sizes XS-XL

\$10.50

Item #: 047900-900

Tights Heavy Weight Opaque-Black (007)

Tights Heavy Weight Opaque-White (119)

Girls, grades: PK-12 ACCESSORIES

One size

\$6.25

Item #: 0FB13B-900

Rosette Barrette-Arlington Plaid (RP 2M) (163)

Girls, grades: PK-12 ACCESSORIES

One size

\$5.00

Item #: 0FB21B-900

3 Button Bow Barrette-Arlington Plaid (RP 2M) (163)

Girls, grades: PK-12 ACCESSORIES

One size

\$7.75

Item #: 0FB240-900

Double Rosette Barrette-Arlington Plaid (RP 2M) (163)

Girls, grades: PK-12 ACCESSORIES

One size

\$6.50

Item #: 0FB260-900

Wide Padded Headband-Arlington Plaid (RP 2M) (163)

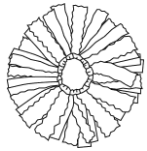
Girls, grades: PK-12 ACCESSORIES

One size

\$5.00

Item #: 0FB29E-900

Lg Streamer Bow-Arlington Plaid (RP 2M) (163)

Girls, grades: PK-12 ACCESSORIES

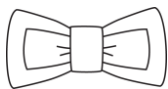
One size \$5.25

Item #: 0FB400-900
Pom Pom Scrunchy-Arlington Plaid (RP 2M) (163)

Girls, grades: PK-12 ACCESSORIES

One size \$7.75

Item #: 0FB48M-900
Mini Ribbon Burst Barrette-Arlington Plaid (RP 2M) (163)

Girls, grades: PK-12 ACCESSORIES

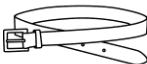
One size \$6.00

Item #: 0FB9B0-900
Flat Bow Barrette-Arlington Plaid (RP 2M) (163)

Girls, grades: PK-12 ACCESSORIES

One size \$5.25

Item #: MK2015-900
Iron on Labels w/Marker (000)

Girls, grades: K-12 ACCESSORIES

Sizes 20-28 \$14.00
Sizes 30-48 \$14.00

Item #: 041300-900
Belt Leather-Black (007)
Belt Leather-Brown (013)

Girls, grades: PK-12 ACCESSORIES

One size \$8.00

Item #: 0FB48L-900
Ribbon Burst Barrette-Arlington Plaid (RP 2M) (163)

Girls, grades: PK-12 ACCESSORIES

One size \$4.75

Item #: 0FB800-900
Narrow Headband-Arlington Plaid (RP 2M) (163)

Girls, grades: PK-12 ACCESSORIES

One size \$6.00

Item #: 0FB9E0-900
Flat Bow Elastic-Arlington Plaid (RP 2M) (163)

Girls, grades: K-12 ACCESSORIES

Youth 2-12 \$18.50
Adult S-XL \$22.50

Item #: 035330-909
Leggings-Black (007)

Girls, grades: K-12 ACCESSORIES

Sizes 20-30 \$20.00
Sizes 32-48 \$21.00

Item #: 041500-900
Belt Braided Leather-Black (007)
Belt Braided Leather-Brown (013)

Girls, grades: 4-12 ACCESSORIES

Sizes S-M-L-XL

\$7.00

Item #: 047300-900

Knee-Hi Cable Knit-Heather Grey (045)

Girls, grades: 5-12 ACCESSORIES

Sizes Petite- Avg-Tall

\$8.50

Item #: 047950-900

Tights Microfiber Opaque-Black (007)

Tights Microfiber Opaque-White (119)

Girls, grades: PK-12 DOLL OUTFIT

One size

\$30.00

Item #: 0FT109-706

Shift/Blouse/Bow Doll outfit- Arlington Plaid (163)

Boys, grades: PK-3 POLO

Youth 2XS-XL

\$23.95

Adult S-3XL

\$25.95

Item #: 08700A-K2W

White Pique S/S w/Whitesburg embroidery (119)

Boys, grades: PK-3 POLO

Youth 2XS-XL

\$27.95

Adult S-3XL

\$29.95

Item #: 08700C-K2W

White Pique L/S w/Whitesburg embroidery (119)

Boys, grades: PK-12 POLO

Youth 2XS-XL

\$28.95

Adult S-3XL

\$30.95

Item #: 08340A-K3W

Performance Polo S/S-Black w/Whitesburg embroidery (007)

Performance Polo S/S-Purple w/Whitesburg embroidery (089)

School Policy: May not be worn with black bottoms.

Boys, grades: PK-12 POLO

Youth 2XS-XL

\$23.95

Adult S-3XL

\$25.95

Item #: 08700A-K2W

Ash Pique S/S w/Whitesburg embroidery (002)

Boys, grades: PK-12 POLO

Youth 2XS-XL

\$23.95

Adult S-3XL

\$25.95

Item #: 08700A-K3W

Black Pique S/S w/Whitesburg embroidery (007)

Purple S/S Pique Knit w/Whitesburg embroidery (089)

School Policy: May not be worn with black bottoms.

Boys, grades: PK-12 POLO

Youth 2XS-XL	\$27.95
Adult S-3XL	\$29.95

Item #: 08700C-K2W

Ash Pique L/S w/Whitesburg embroidery (002)

Boys, grades: PK-12 POLO

Youth 2XS-XL	\$27.95
Adult S-3XL	\$29.95

Item #: 08700C-K3W

Black Pique L/S w/Whitesburg embroidery (007)

Purple L/S Pique Knit w/Whitesburg embroidery (089)

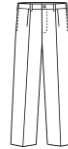
School Policy: May not be worn with black bottoms.

Boys, grades: PK-K PANTS

Youth 2-6	\$22.00
Youth 7-20	\$24.00

Item #: 044160-965

Pull on-Khaki Twill (068)

Boys, grades: PK-12 PANTS

Boys Reg 3-7 or Slim 4-7	\$28.00
Boys Reg 8-16 or Slim 8-16	\$30.00
Boys Husky 8-32	\$34.00
Mens 27-32 Hemmed	\$35.00
Mens 33-48	\$35.00

Item #: 071000-962

Boys-Hawthorne Plt Front - Khaki Twill (049)

Boys, grades: PK-12 PANTS

Boys Reg 3-7 or Slim 4-7	\$28.00
Boys Reg 8-16 or Slim 8-16	\$30.00
Boys Husky 8-32	\$34.00
Mens 27-32 Hemmed	\$35.00
Mens 33-50	\$35.00

Item #: 077000-962

Boys-Irvington Flat Front - Black Twill (007)

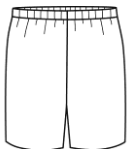
Boys-Irvington Flat Front - Khaki Twill (049)

Boys, grades: K-12 PANTS

Boys Reg 3-7 or Slim 4-7	\$28.00
Boys Reg 8-16 or Slim 8-16	\$30.00
Boys Husky 8-32	\$34.00
Mens 27-32 Hemmed	\$35.00
Mens 33-50	\$35.00

Item #: 077500-968

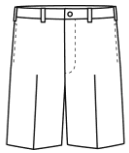
Boys-Harbour Flat Front - Khaki (049)

Boys, grades: PK-K WALK SHORTS

Youth 2-6	\$20.00
Youth 7-20	\$22.00

Item #: 044600-965

Pull on-Khaki Twill (068)

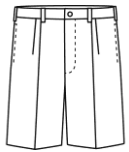
Boys, grades: PK-12 WALK SHORTS

Boys Reg 3-7 or Slim 4-7	\$25.00
Boys Reg 8-16 or Slim 8-16	\$27.00
Boys Husky 8-32	\$29.00
Mens 27-32	\$31.00
Mens 33-50	\$31.00

Item #: 040720-962

Boys-Irvington Flat Front-Black Twill (007)

Boys-Irvington Flat Front-Khaki Twill (049)

Boys, grades: PK-12 WALK SHORTS

Boys Reg 3-7 or Slim 4-7	\$25.00
Boys Reg 8-16 or Slim 8-16	\$27.00
Boys Husky 8-32	\$29.00
Mens 27-32	\$31.00
Mens 33-48	\$31.00

Item #: 040900-962

Boys-Hawthorne Plt Front-Khaki Twill (049)

Boys, grades: PK-12 CARDIGAN

Youth 2XS-XL	\$41.50
Adult S-XL	\$51.25
Adult 2XL-3XL	\$51.25

Item #: 011000-K2W

Zippered Cardigan - Heather Grey w/Whitesburg embroidery (045)

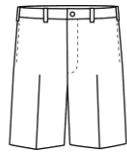
50% Off! While Supplies Last; All Sales are Final.

Boys, grades: PK-12 SWEATSHIRT

Youth 2XS-XL	\$28.50
Adult S-3XL	\$32.75

Item #: 093000-K2W

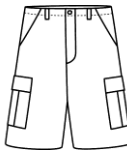
Sweatshirt 1/4 Zip - Oxford Grey w/Whitesburg embroidery (759)

Boys, grades: PK-12 WALK SHORTS

Boys Reg 3-7 or Slim 4-7	\$25.00
Boys Reg 8-16 or Slim 8-16	\$27.00
Boys Husky 8-32	\$29.00
Mens 27-32	\$31.00
Mens 33-50	\$31.00

Item #: 040740-968

Boys-Harbour Flat Front-Khaki (049)

Boys, grades: K-12 WALK SHORTS

Boys 4-16	\$26.00
Prep 28-32	\$33.00
Mens 33-40	\$33.00

Item #: 040950-985

Cargo pocket shorts -Khaki (049)

70% Off! While Supplies Last; All Sales are Final.

Boys, grades: PK-12 CARDIGAN

Youth 2XS-XL	\$52.30
Adult S-3XL	\$57.30

Item #: 063500-K8W

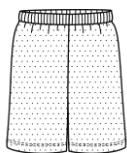
V-Neck- Black w/White Arm Stripes w/Whitesburg W emblem (843)

Boys, grades: PK-12 SWEATSHIRT

Youth 2XS-XL	\$28.50
Adult S-3XL	\$32.75

Item #: 093000-K3W

Sweatshirt 1/4 Zip - Black w/Whitesburg embroidery (007)

Boys, grades: 7-8 GYM WEAR

Youth XS-XL	\$18.50
Adult S-3XL	\$20.75

Item #: 005800-K4W

Shorts Nylon Mini Mesh-Black w/Whitesburg screen (007)

School Policy: Required for P.E.

Boys, grades: 7-8 GYM WEAR

Youth XS-XL	\$18.00
Adult S-3XL	\$19.00

Item #: 053700-K5W

Unisex Wicking Crew T-Shirt 100P-Oxford Grey w/Whitesburg screen (759)

School Policy: Required for P.E.

Boys, grades: PK-12 JACKETS

Youth XS-L	\$48.50
Adult XS-XL	\$56.00
Adult 2XL-3XL	\$58.50

Item #: 037000-K3W

Hooded Microfibre -Black w/Whitesburg embroidery (007)

Boys, grades: PK-12 JACKETS

Youth S-L	\$25.00
Adult S-XL	\$25.50
Adult 2XL-3XL	\$29.50

Item #: 046000-K3W

Wind Anorak 100N-Black w/Whitesburg embroidery (007)

Boys, grades: PK-12 JACKETS

Youth XS-XL	\$37.50
Adult XS-XL	\$44.00
Adult 2XL	\$46.25
Adult 3XL	\$50.75

Item #: 0ST241-KYZ

Sport-Wick Fleece Full Zip Jacket -Dk Smoke Grey /Whitesburg emb (026)

Boys, grades: PK-12 FLEECE JACKET

Youth 2XS-XL	\$43.00
Adult S-2XL	\$53.00

Item #: 054000-K3W

Black Microfleece Jacket-front zipper w/Whitesburg embroider (007)

Boys, grades: PK-12 FLEECE JACKET

Youth 2XS-XL	\$43.00
Adult S-3XL	\$53.00

Item #: 054000-KYZ

Heather Grey Microfleece Jacket-front zipper w/Whitesburg embroi (045)

Boys, grades: PK-6 ACCESSORIES

One size	\$10.00
----------	---------

Item #: 014150-900

Belt Stretch w/Magnetic Closure-Black (007)
Belt Stretch w/Magnetic Closure-Khaki (049)

Boys, grades: PK-12 ACCESSORIES

Sizes S-M-L-XL

\$6.00

Item #: 047100-900

Crew Socks Cotton-Black (007)

Crew Socks Cotton-White (119)

Boys, grades: PK-12 ACCESSORIES

One size

\$5.25

Item #: MK2015-900

Iron on Labels w/Marker (000)

Boys, grades: K-12 ACCESSORIES

Sizes 20-28

\$14.00

Sizes 30-48

\$14.00

Item #: 041300-900

Belt Leather-Black (007)

Belt Leather-Brown (013)

Boys, grades: K-12 ACCESSORIES

Sizes 20-30

\$20.00

Sizes 32-48

\$21.00

Item #: 041500-900

Belt Braided Leather-Black (007)

Belt Braided Leather-Brown (013)

Notes from your Principal:

1. Skirt and jumper lengths should not be more than 2 inches above the knee.
2. Bike shorts are required under skirts and jumpers.

Please Note: students may now wear black polo's with black pants or black skirts.

16-Sep-19

School Code: BAWBCA

0.09